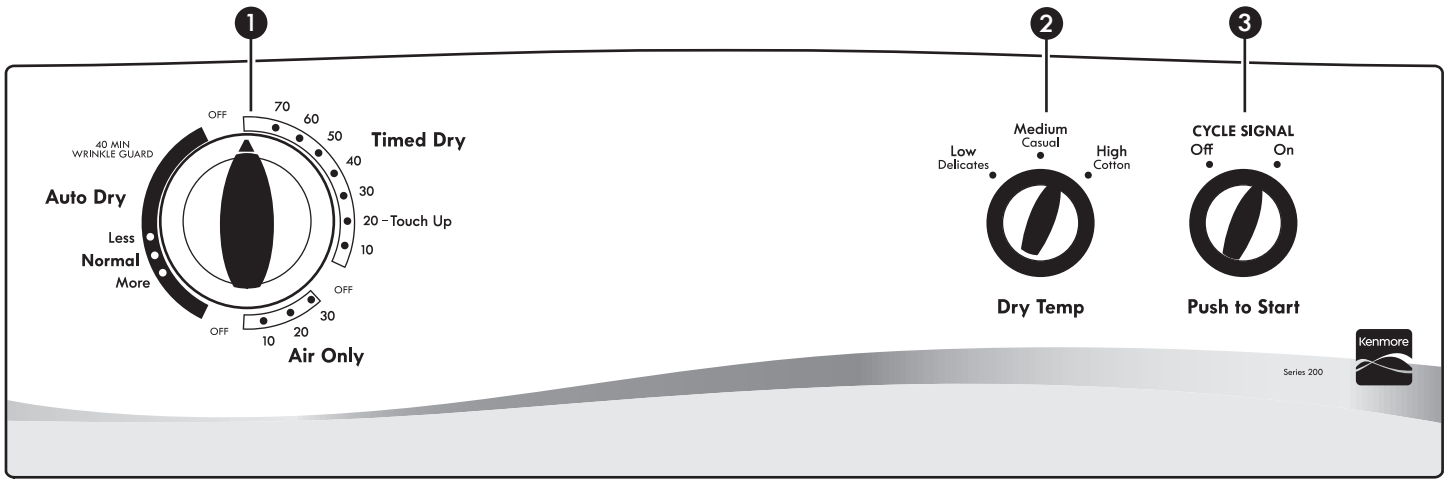


## CONTROL PANEL AND FEATURES



Not all features and options are available on all models.  
Appearance may vary.

### 1 DRYER CYCLE KNOB

Turn the knob to select a cycle for your laundry load. See "Cycle Guide" for detailed descriptions of cycles.

#### Timed Dry

Will run the dryer for the specified time on the control. On models with a selectable temperature knob, you may choose a setting based on the fabrics in your load. Drying time and temperature will depend on your dryer model.

#### Auto Dry

Auto Dry cycles give the best drying in the shortest time. Drying time will vary based on fabric type, load size, and dryness setting.

#### Air Only

Use the Air Only setting to dry foam, rubber, plastic, or heat-sensitive fabrics.

#### Wrinkle Guard™ function (on some models)

When you are unable to remove a load of clothes from the dryer as soon as it stops, wrinkles can form. The WRINKLE GUARD™ function periodically tumbles, rearranges, and fluffs the load without heat to help keep wrinkles from forming, for up to 40 minutes at the end of a cycle.

### 2 Dry Temp (on some models)

Select a drying temperature based on the fabrics in your load. If you are unsure of the temperature to select for a load, select the lower setting rather than the higher setting. See "Cycle Guide."

### 3 Cycle Signal/PUSH TO START

The Cycle Signal produces an audible sound when the drying cycle is finished. On some models, this knob is combined with the PUSH TO START button. Promptly removing clothes at the end of the cycle reduces wrinkling.

Turn the CYCLE SIGNAL knob to select the desired setting (On or Off). With combined buttons, press and hold the CYCLE SIGNAL/PUSH TO START button to start the dryer. On models without the cycle signal, press the PUSH TO START button to start the dryer.

**NOTE:** During the Wrinkle Guard™ function and when the Cycle Signal is on, the tone will sound every 5 minutes until the clothes are removed or the Wrinkle Guard™ function ends.

## CYCLE GUIDE – AUTO DRY CYCLES

Not all cycles and settings are available on all models. Settings and options shown in **bold** are default settings for that cycle.

**AUTO DRY** – Senses moisture in the load or air temperature and shuts off when the load reaches the selected dryness level. Depending on model, temperature may be selected on cycle knob or be a separate control. Choose Normal to save energy.

Items to dry:	Dry Temp:	Dryness Level:	Available Options:	Cycle Details:
Jeans, heavy work clothes, towels	<b>High Cotton</b>	More <b>Normal</b> Less	Cycle Signal Dry Temp	Automatic cycles give the best drying in the shortest time. Drying time varies based on load size, and dryness setting. Select a drying temperature based on the fabrics in your load. If you are unsure of the temperature to select for a load, select the lower setting rather than the higher setting.
Work clothes, medium weight fabrics, sheets	<b>Medium Casual</b>	More <b>Normal</b> Less	Cycle Signal Dry Temp	
Casual, shirts, pants, lightweight items, synthetics, delicates, athletic wear	<b>Low Delicates</b>	More <b>Normal</b> Less	Cycle Signal Dry Temp	

**NOTE:** If loads do not seem as dry as you would like, select More next time you dry a similar load. If loads seem drier than you like, select Less next time you dry a similar load.

## CYCLE GUIDE – TIMED DRY CYCLES

Not all cycles and settings are available on all models.

**TIMED DRY** – Will run the dryer for the specified time on the control. Depending on model, temperature may be selected on cycle knob or be a separate control.

Items to dry:	Cycle:	Dry Temp:	Available Options:	Cycle Details:
Any load	Timed Dry	Any	Dry Temp	Select a drying temperature based on the fabrics in your load. If you are unsure of the temperature to select for a load, select the lower setting rather than the higher setting.
Any load	Touch up	Any	N/A	This is the last step in a cycle that uses heat. The load is cooled slowly to reduce wrinkling and make it easier to handle. Use this cycle to smooth wear or packing wrinkles.
Rubber, plastic, heat sensitive fabrics	Air Only	No heat	Time Adjustment	Use a Air Only (no heat) setting for foam, rubber, plastic, or heat-sensitive fabrics.

### Setting the Drying Temperature

If your dryer has multiple temp settings:

A High Cotton temp setting may be used for drying heavyweight items such as towels and work clothes.

A Low Delicates or Medium Casual temp setting may be used for drying medium-weight items such as sheets, blouses, dresses, underwear, permanent press fabrics, and some knits.

Use a Air Only (no heat) setting for foam, rubber, plastic, or heat-sensitive fabrics.

Line dry bonded or laminated fabrics.

**NOTE:** If you have questions about drying temperatures for various loads, refer to the care label directions.

## USING YOUR DRYER

### **⚠ WARNING**



#### **Explosion Hazard**

Keep flammable materials and vapors, such as gasoline, away from dryer.

Do not dry anything that has ever had anything flammable on it (even after washing).

Failure to follow these instructions can result in death, explosion, or fire.

**WARNING:** To reduce the risk of fire, electric shock, or injury to persons, read the IMPORTANT SAFETY INSTRUCTIONS before operating this appliance.

### **⚠ WARNING**



#### **Fire Hazard**

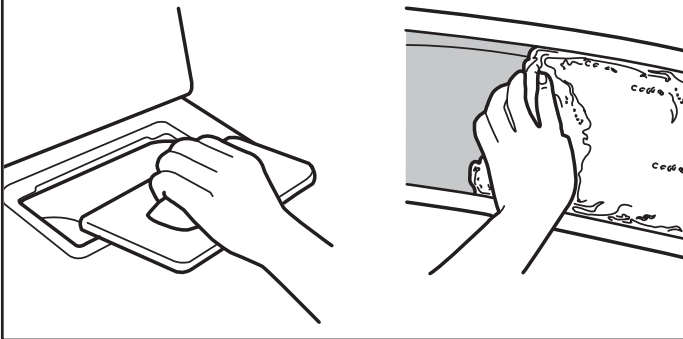
No washer can completely remove oil.

Do not dry anything that has ever had any type of oil on it (including cooking oils).

Items containing foam, rubber, or plastic must be dried on a clothesline or by using an Air Cycle.

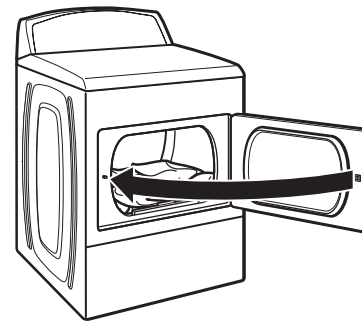
Failure to follow these instructions can result in death or fire.

### **1. Clean the lint screen**



Clean the lint screen before each load. Pull the lint screen out of its holder. Roll lint off the screen with your fingers. Do not rinse or wash screen to remove lint. Push the lint screen firmly back into place. For additional cleaning information, see "Dryer Care."

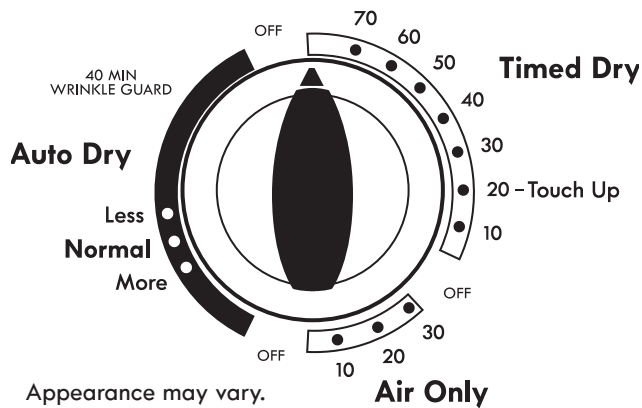
### **2. Load the dryer**



Place laundry in the dryer. Close the door. Do not tightly pack the dryer; clothes should be able to tumble freely.

**NOTE:** Your model may have a different door than the one shown. Some models have drop down doors.

### 3. Select the desired cycle



Select the desired cycle for your load. See the "Cycle Guide" for more information about each cycle.

#### Auto Dry cycles

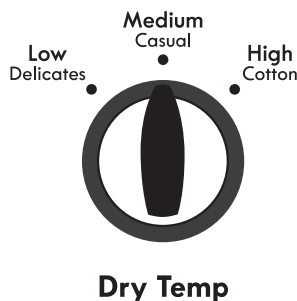
You can select a different dry level, depending on your load, by turning the knob to More, Normal, or Less.

Selecting More, Normal, or Less automatically adjusts the dryness level at which the dryer will shut off. Once a dry level is set, it cannot be changed without stopping the cycle.

Auto Dry cycles give the best drying in the shortest time. Drying time varies based on fabric type, load size, and dryness setting.

**NOTE:** More Dry removes more load moisture. Normal Dry is used for a starting point for Auto Dry cycles. Choose normal to save energy. Less Dry removes less moisture and is used for loads you may want to put on a hanger to complete drying.

### 4. Set temperature (on some models)



Turn the DRY TEMP knob to change the drying temperature setting. See "Setting the Drying Temperature."

### 5. Select Cycle Signal, if desired (on some models)



Turn the CYCLE SIGNAL knob to select the desired setting (On or Off). The Cycle Signal produces an audible sound when the drying cycle is finished. Promptly removing clothes at the end of the cycle reduces wrinkling.

**NOTE:** During the Wrinkle Guard™ function and if the Cycle Signal is on, the tone will sound every 5 minutes until the clothes are removed, or the Wrinkle Guard™ function ends.

### 6. Press and hold PUSH to START to begin cycle



Appearance may vary.

Press and hold the PUSH to START button to begin the cycle.

Promptly remove garments after cycle has completed to reduce wrinkling. The Wrinkle Guard™ function at the end of the cycle avoids wrinkling when you are unable to remove a load from the dryer as soon as it stops.