

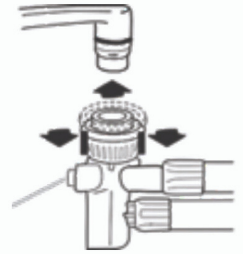


Compact Washing Machine User Guide

1

Connect the washing machine.

Roll the machine to the sink area. Note that it rolls forward and backward, the wheels do not roll from side to side. Make sure the machine is level to avoid movement during the spin cycle. Attach the fill-and-drain hose connector to a single-spout hot/cold water faucet. Move the locking collar down while lifting the connector until it snaps into place. Slowly turn the faucet all the way on. Plug the machine into a grounded 3-prong outlet.



2

Set the water temperature for the wash cycle.

The water temperature is controlled by your faucet, not the machine. Set the WASH/RINSE TEMPERATURE setting on the machine to COLD/COLD. Then adjust your faucet to the appropriate water temperature. To test the water temperature, press the red water-flow button on the hose connector.

3

Load the machine.

Place clothes loosely into the washing machine filling the basket about $\frac{1}{3}$ full. Do not overload the machine. Load items evenly to maintain washing machine balance. Add liquid or pod detergent. Refer to packaging for proper amount based on load size.

4

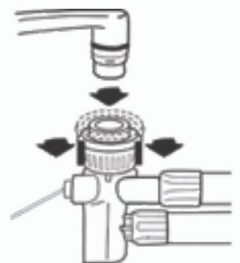
Select cycle and start the machine.

Press the WATER LEVEL button to select the correct setting for your laundry load and the type of fabric being washed. For a medium load, the indicator light is on. For a large load, the light is off. Push START/OFF to start the machine. When the cycle is complete, all of the lights will turn off. Please note that the lid must be closed for the machine to operate. It is normal for the washing machine to cycle on/off while spinning.

5

Disconnect the machine.

When you are done using the machine, turn off the water faucet and unplug the power cord. Press the red water-flow button to release water pressure in the hose. Pull the locking collar down to remove the connector from the faucet. Pour any remaining water out of the faucet connector. Place the fill-and-drain hose on the plastic holder in the back of the machine. Return the machine to the storage area.



Multi-Family Laundry Solutions Since 1956

Automatic
LEASING  SERVICE



FIND YOUR PERFECT LAUNDRY SOLUTION CALL 800.558.2342 VISIT automaticleasing.com



Compact Dryer User Guide

1

Clean the lint screen.

Open the dryer door and locate the lint screen on the back wall of the dryer drum. Pull the lint screen straight out. Squeeze the body of the lint screen lightly while pulling off the cover. Remove lint and replace cover on lint screen body. Push the lint screen firmly back into place and close the door. Once a month rinse the lint screen with warm water to prevent residue build up.



2

Check the lint trap box.

Locate the lint trap box attached to the hose. Remove the top by releasing the latches on either side. Remove any lint, rinse the box with warm water, and refill with about one inch of water. Note that there must be at least one inch of water in the box at all times to prevent lint and dust from blowing around inside the dryer. Secure the top back to the box.

3

Load the dryer.

Place clothes loosely inside the dryer and close the door. Do not over pack the dryer. Allow space for clothes to tumble freely.

4

Select cycle and start the dryer.

Turn the CYCLE CONTROL knob to the recommended cycle for the type of load.

Permanent Press

This cycle automatically shuts off the dryer when the selected dryness is reached. Note that the CYCLE CONTROL knob does not move until the load is almost dry. After the cool down, the knob automatically turns to off and tumbling stops.

Timed Drying Cycle

Use this cycle to complete drying if items are still damp after the automatic cycle. Timed drying is also useful for heavy-weight items that require a long drying time, as well as lightweight items, such as blouses and knits that require a short drying time. For damp dry, turn the CYCLE CONTROL knob to 30 minutes or less.

Press the PUSH TO START button to start the dryer.

Laundry Tips & Best Practices

- Do not overload the washing machine. Items should move easily through the water. Overloading can cause poor cleaning and/or water overflow or leakage.
- For best results, mix large and small items in each load.
- Clean the lint screen before and after each dry cycle. A blocked screen can increase drying time.

Automatic

LEASING  SERVICE

CALL 800.558.2342 VISIT [automaticleasing.com](https://www.automaticleasing.com)