

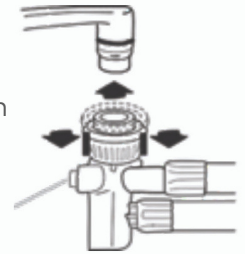


# Portable Washing Machine User Guide

1

## Connect the washing machine.

Roll the machine to the sink area. Note: it rolls forward and backward; the wheels do not roll from side to side. Make sure the machine is level and that it is not pushed directly against a cabinet or wall. Attach the fill-and-drain hose connector to a single-spout hot/cold water faucet. Move the locking collar down while lifting the connector until it snaps into place. Slowly turn the faucet all the way on to ensure the hose is properly attached and not leaking or dripping. To test the water temperature, press the red water-flow button on the hose connector. Plug the machine into a grounded 3-prong outlet, and press the POWER button to turn the machine on.



2

## Load the machine, and add detergent.

Place clothes loosely into the washing machine filling the basket about  $\frac{1}{3}$  full. Do not overload the machine. Load items evenly to maintain washing machine balance. Add liquid or pod detergent, as well as fabric softener as needed. Refer to packaging for proper amount of detergent based on load size.

3

## Select wash cycle.

Press the CYCLE button to choose your wash type. The length of your wash is determined by cycle selection. Press the OPTIONS button to add additional wash settings. When using fabric softener, confirm the DEEP RINSE setting has been turned on.

4

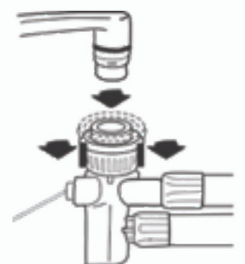
## Set the water temperature, and start the machine.

The water temperature is controlled by your faucet, not the machine. Be sure to first press the WATER TEMP button, set it to COLD, and then adjust your faucet to the appropriate water temperature. Close the lid and press the START button to begin the machine. When the cycle is complete, all of the lights will turn off. It is normal for the washing machine to cycle on/off while spinning.

5

## Disconnect the machine.

When you are done, turn off the water faucet and unplug the power cord. Press the red water-flow button to release water pressure in the hose. Pull the locking collar down to remove the connector from the faucet. Pour any remaining water out of the faucet connector. Place the fill-and-drain hose back in the machine. Return the machine to the storage area.



Multi-Family Laundry Solutions Since 1956

**Automatic**  
LEASING  SERVICE





# Portable Dryer User Guide

## 1

### Clean the lint screen.

Open the dryer door, and locate the lint screen on the back wall of the dryer drum. Pull the lint screen straight out. Squeeze the body of the lint screen lightly while pulling off the cover. Remove lint and replace cover on lint screen body. Push the lint screen firmly back into place, and close the door. Once a month, rinse the lint screen with warm water to prevent residue build up.



## 2

### Check the lint trap box.

Locate the lint trap box behind the dryer that is attached to the hose. Remove the top by releasing the latches on either side. Remove any lint, rinse the box with warm water, and refill with about two inches of water. Note: there must be at least two inches of water in the box at all times to prevent lint and dust from blowing around inside the dryer. Secure the top back to the box, and return it to the back of the dryer. Be sure to check this weekly, depending on dryer use.

## 3

### Load the dryer.

Place clothes loosely inside the dryer, and close the door. Do not overpack the dryer. Allow space for clothes to tumble freely.

## 4

### Select cycle, and start the dryer.

Turn the CYCLE CONTROL knob to the recommended cycle for the type of load.

#### Timed Dry Cycle

Use this cycle to complete drying if items are still damp after the automatic cycle. Timed drying is also useful for heavy-weight items that require a long drying time, as well as lightweight items, such as blouses and knits that require a short drying time. For damp dry, turn the CYCLE CONTROL knob to 30 minutes or less.

#### Air Dry Cycle

This cycle only tumbles clothes and does not provide any heat.

Press the START button to start the dryer.

## Laundry Tips & Best Practices

- Do not overload the washing machine. Items should move easily through the water. Overloading can cause poor cleaning and/or water overflow or leakage.
- For best results, mix large and small items in each load.
- Clean the lint screen before and after each dry cycle. A blocked screen can increase drying time.

# Automatic

LEASING  SERVICE

CALL 800.558.2342 VISIT [automaticleasing.com](http://automaticleasing.com)